



RALOE General Catalogue

Fermator

 **Savera**

EMESA

RALOE General Catalogue
Edition: September 2017



WHO ARE RALOE

We are a benchmark company in the elevation sector characterized by its commitment to quality and excellence in customer service.

Since Raloe's foundation in 1984, we have been opening up new business delegations and we currently have offices located in Madrid, Valencia, Barcelona, Sevilla, Paris and London.

Furthermore, we have developed and expanded our logistical network with presence in several countries such as United Kingdom, France, Germany, Poland, Australia, Morocco, Algeria, Saudi Arabia, Finland and Northern Ireland in order to ensure the best service and provide complete solutions to our customer's needs in an even more competitive and interconnected environment.

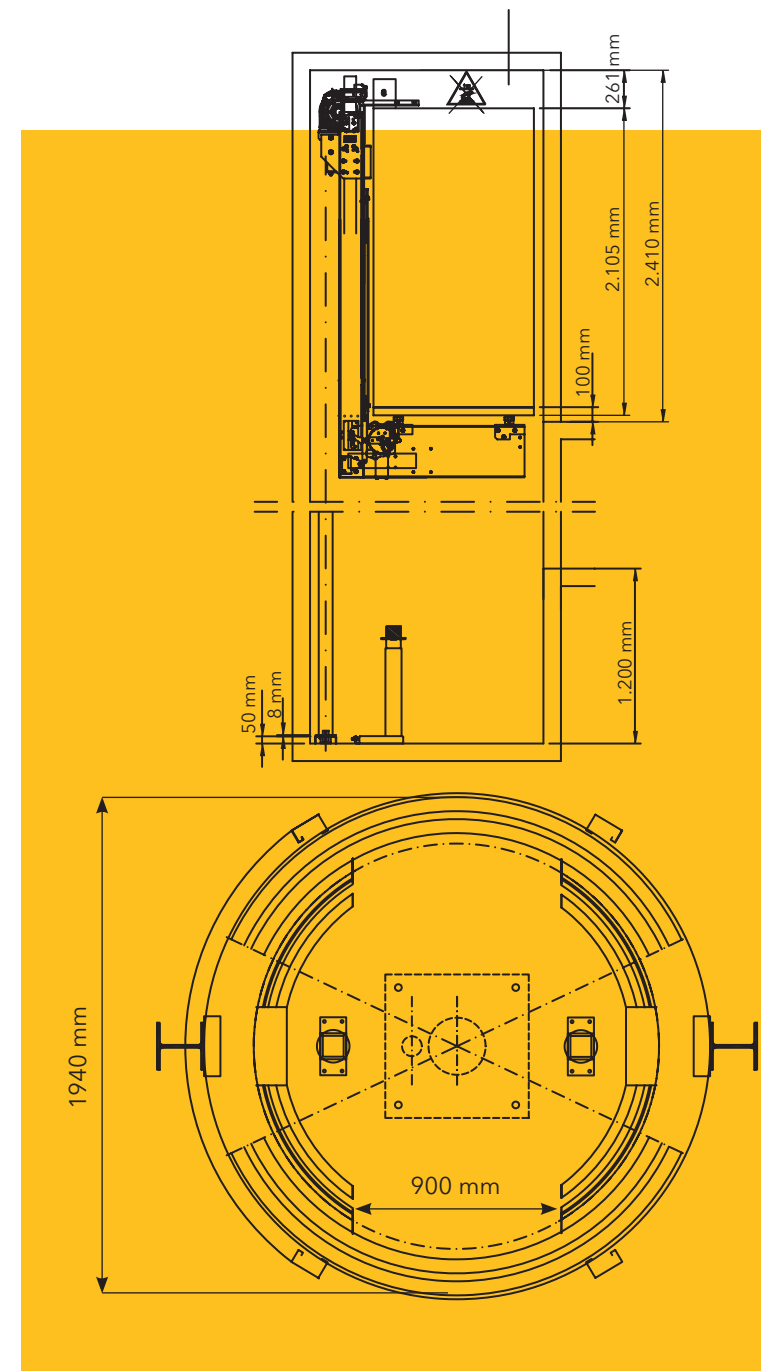
We make the difference:

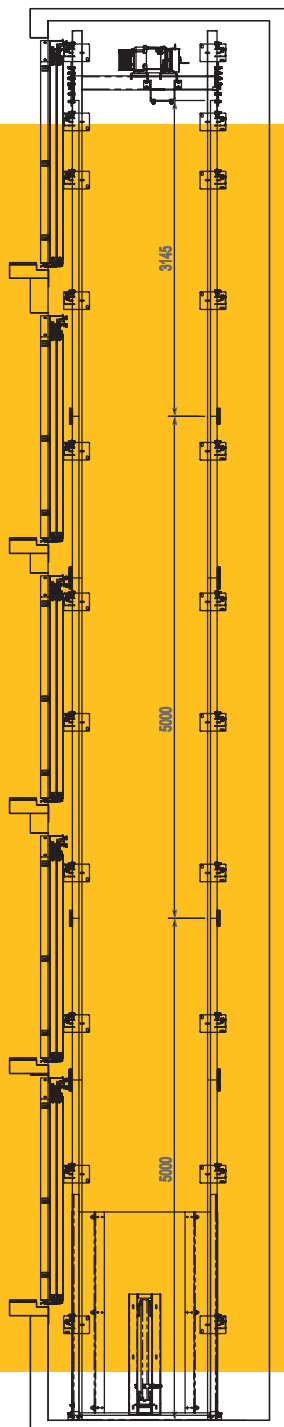
- _ We give our customers contrasted solutions.
- _ We create internal structures of integral quality.
- _ We improve the product by integrating the company with our customer's needs.
- _ We have a very flexible and adaptable manpower, with an important participation in the strategic planning of the company.

HUMAN TEAM

We have at our disposal a team of 120 experienced and qualified professionals with aim to provide technical support regarding lifts and their components in more than 20 countries worldwide.

Our employees combine experience and innovation creating a good environment which enables their personal and professional development within the company.





OUR GOAL

Professionalism.

We draw on the extensive experience of our three partners who are key specialists in their sectors: Fermator, Savera Group and Emesa. In collaboration with them, Raloe has spent years investing in technological advancements-both in lift design as well as in computer equipment and systems ensuring the efficiency of our professional service up to final delivery.

Customer commitment.

Thanks to our qualified team, we are able to guarantee quick and effective service. We also cater for the individual needs of each of our customers and create custom-designed projects offering the best solutions.

Specialisation.

Our reason for being has placed our company as a reference in innovation and application of new technologies in lifts and components distribution. We develop specific, custom -designed projects to meet our customers' needs. The technical and the R&D departments work together in planning and designing lifts to provide the best technical solution. In addition, we are continuously optimizing and broadening our range of lifts for refurbishment developing new product solutions and exemptions from harmonized rules. In addition, Raloe has over 15,000 references and approximately 3.5 million.

**"FOR PROFESSIONALS
BY PROFESSIONALS"**



PARTNERS

Fermator

Fermator Group is the largest mono-product manufacturer of automatic doors for lifts in the world. Fermator doors are installed worldwide for light, medium and heavy traffic duty lifts, for domestic use, offices, airports, hotels and public buildings.



Savera

Savera manufactures and distributes systems and provides services in the elevator industry. Based in Vera de Bidasoa (Navarre) and present in 5 continents, its target customers are multinational companies, with which long-term collaboration agreements are established. The strategy of Savera is namely to supply GLOBAL INTEGRAL SOLUTIONS.

EMESA

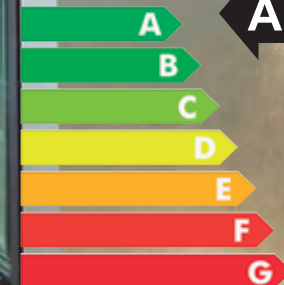
The Company is endowed with state-of-the-art technology, both in engineering and design.

The factory has 12.000m2 of production area out of a total 50.000 m2 surface where the latest and most suitable technology in steel sheet transformation is used. In addition, it includes different assembly lines especially designed for the assembly of lift cabins, frame for cabins and counterweight, and every type of accessories.



ENERGY EFFICIENCY

The Gearless Lifts are highly efficient with an Energy Recovery System reusing it in the same installation, as well as the disconnection of the elements in Stand-by.

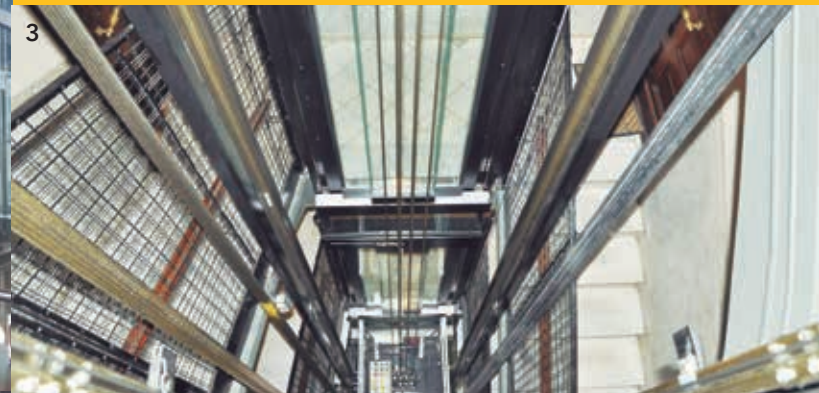


INDEX

6	Portfolio
8	Our system
9	Our suppliers
10	Symbio
14	Optimus
18	Electric Lift
20	Hydraulic Lift
25	Electric Homelift: Beltus
27	Hydraulic Homelift: MyDomestic
30	ParkingLift
32	Freight Lift
34	Structures
36	Stairlift
37	Various
38	Glass panel car
40	Car models
42	Car finishes
46	Mirrors & Doors
47	Operating Panel & Display
48	Quality, our goal
49	Standards



PORTFOLIO



- 1. Interior building
Optimus 450 kg
- 2. Duplex with structure
Symbio 1600 kg
- 3. Stairwell
Electric Lift 450 kg
- 4. Homelift with structure
MyDomestic 350 kg
- 5. Refurbishment building
Hydraulic Lift 630 kg





6. Refurbishment building

Electric Lift 320 kg

7. Refurbishment building

Optimus 320 kg

8. Unifamiliar negocio.

MyDomestic 385 kg

9. Refurbishment building

Optimus 450 kg

OUR SYSTEM

Currently, SAP is our management system.



We have a product configurator who guarantees the application of the engineering rules in every moment.

Our configurator system is based on a knowledge database with more than 60.000 characteristics, 8.000 data tables and 20.000 rules. The data tables have the combination of the possible values. The rules articulate all possible values and determinate when and what are viable in each case.

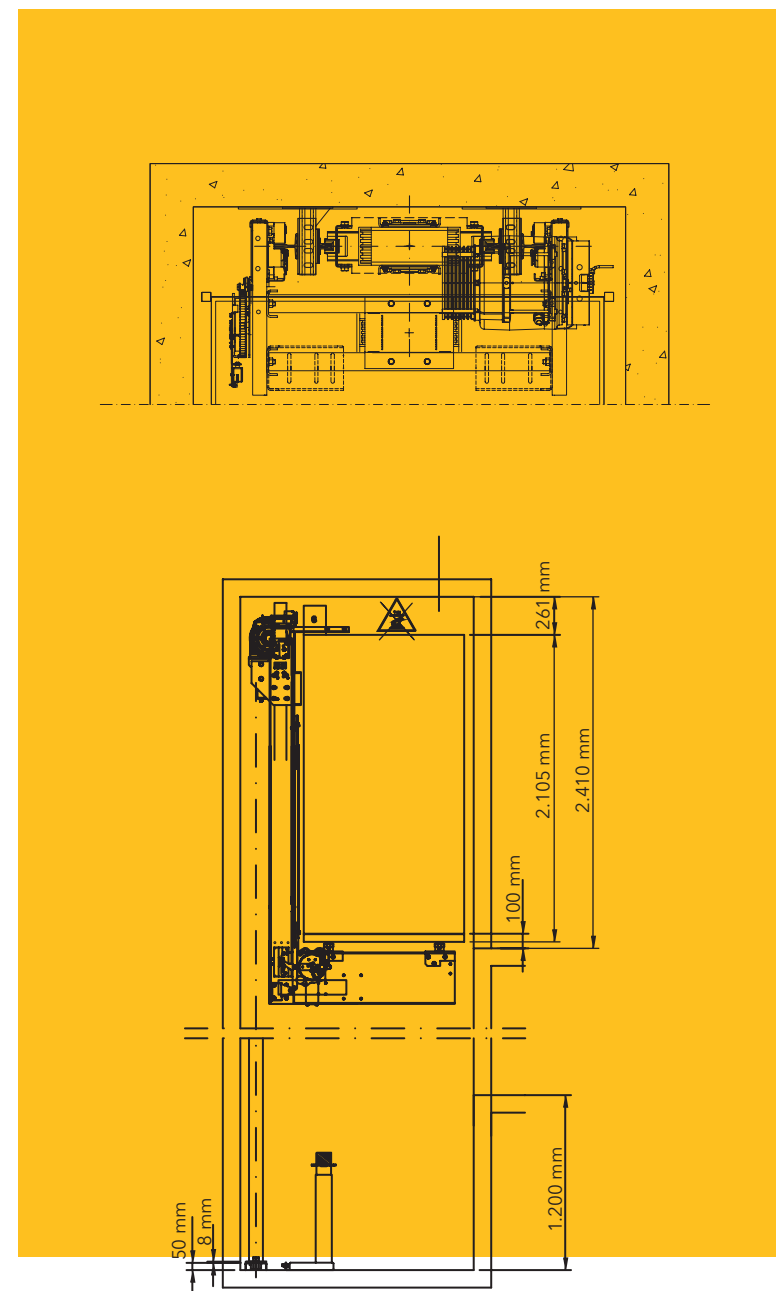
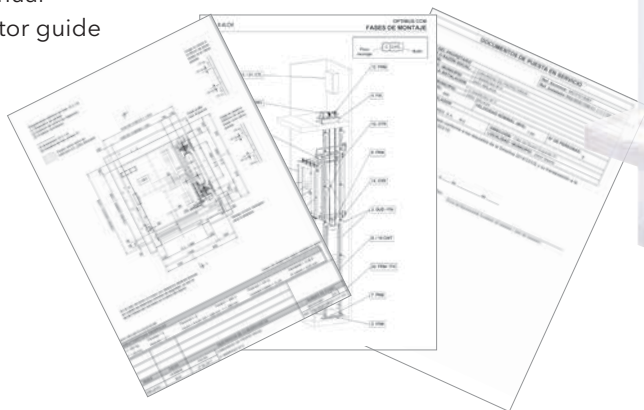
This configurator system has different quality features:

- Guaranteed validation technique.
- Guaranteed Quality level.
- 48-Hour Express Budget.
- Immediate standard drawings.
- Immediate assembly manual.

Documentation:

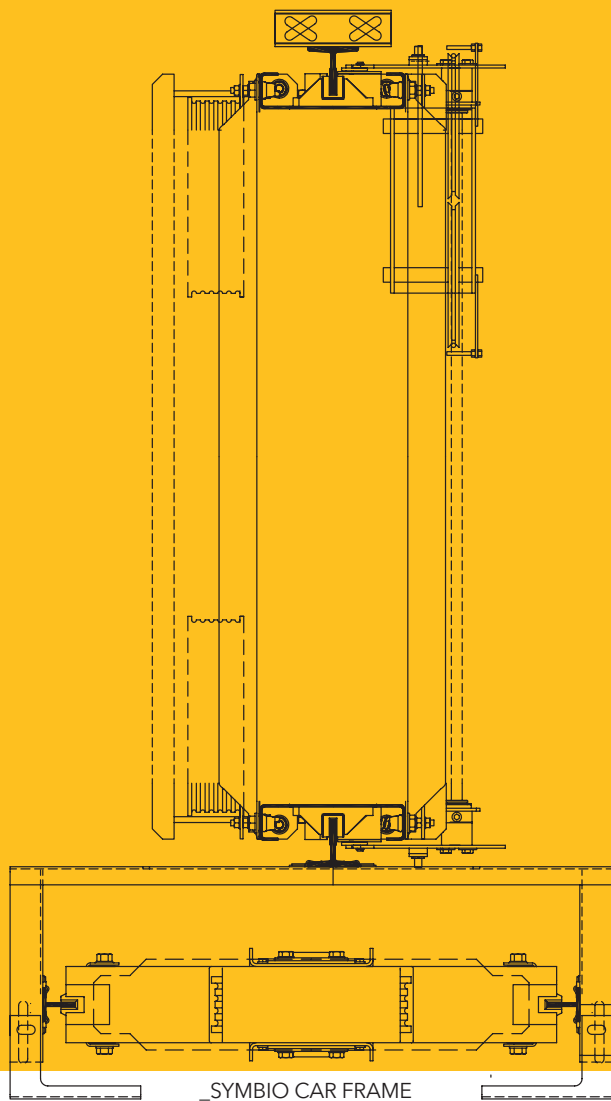
The SAP system provides us detailed documentation, automatically:

- _ Drawibg
- _ Installation manual
- _ Elevator operator guide



Car frame

EMESA



OUR SUPPLIERS

Machines



Hydraulic kit



Doors



Control Panel



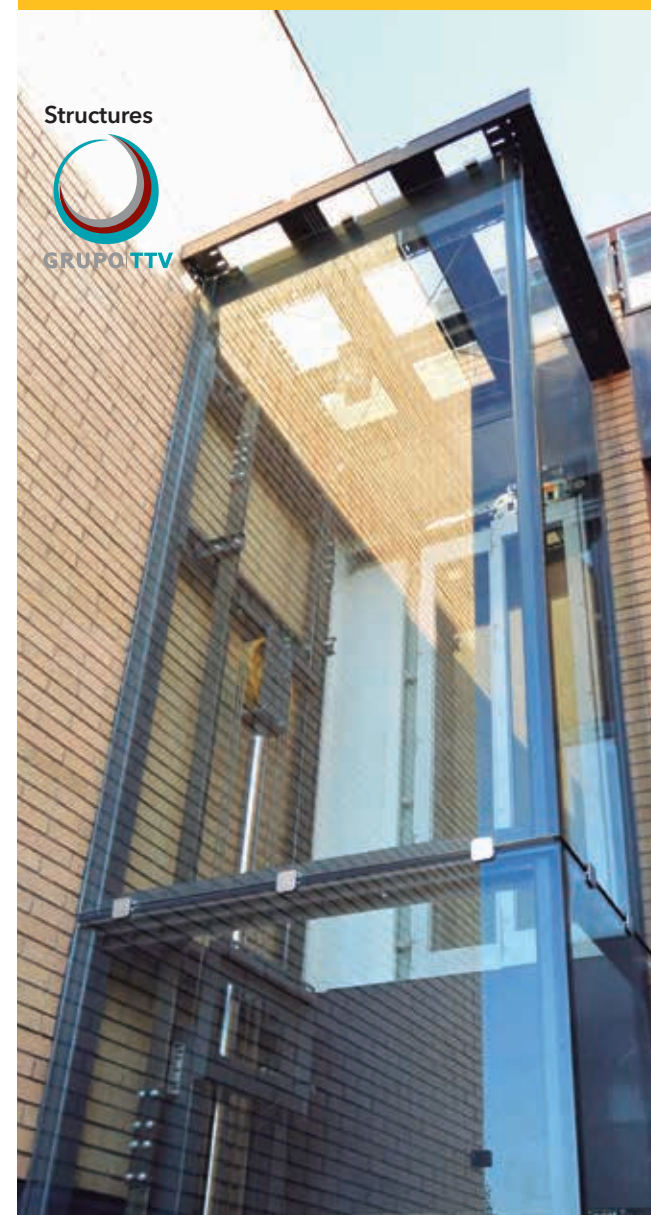
Guides



Operating Panels and Push buttons



Structures



ADVANTAGES

Space optimisation:

No machine room required.

Mechanic Efficiency:

Lower power consumption with a gearless machine. Plus, it needs no oil and does not create unnecessary noise.

Single-phase:

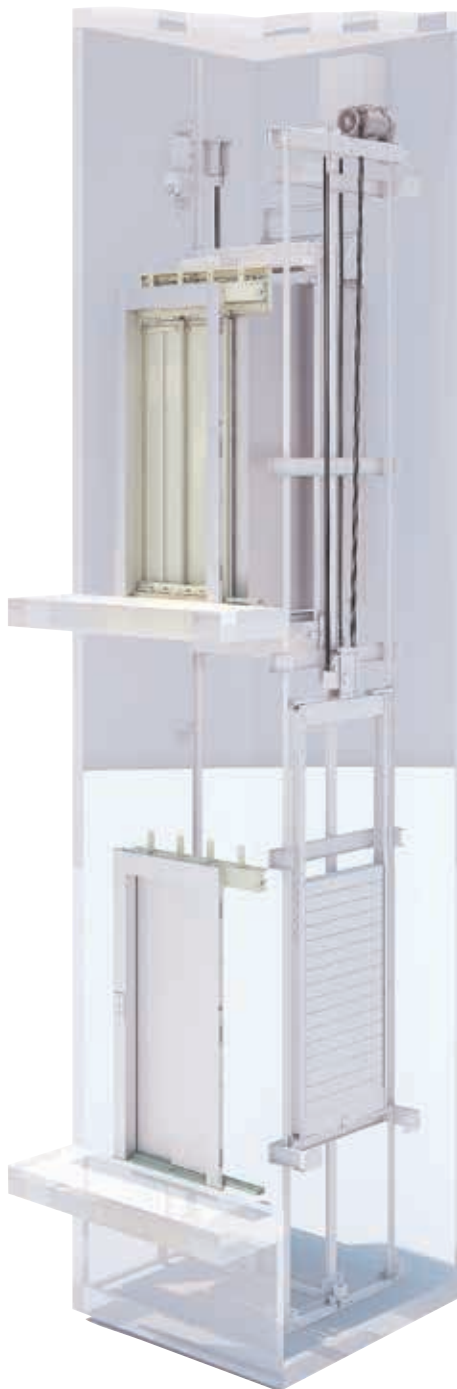
Connection to a singlephase plug 220 V.

Easy maintenance:

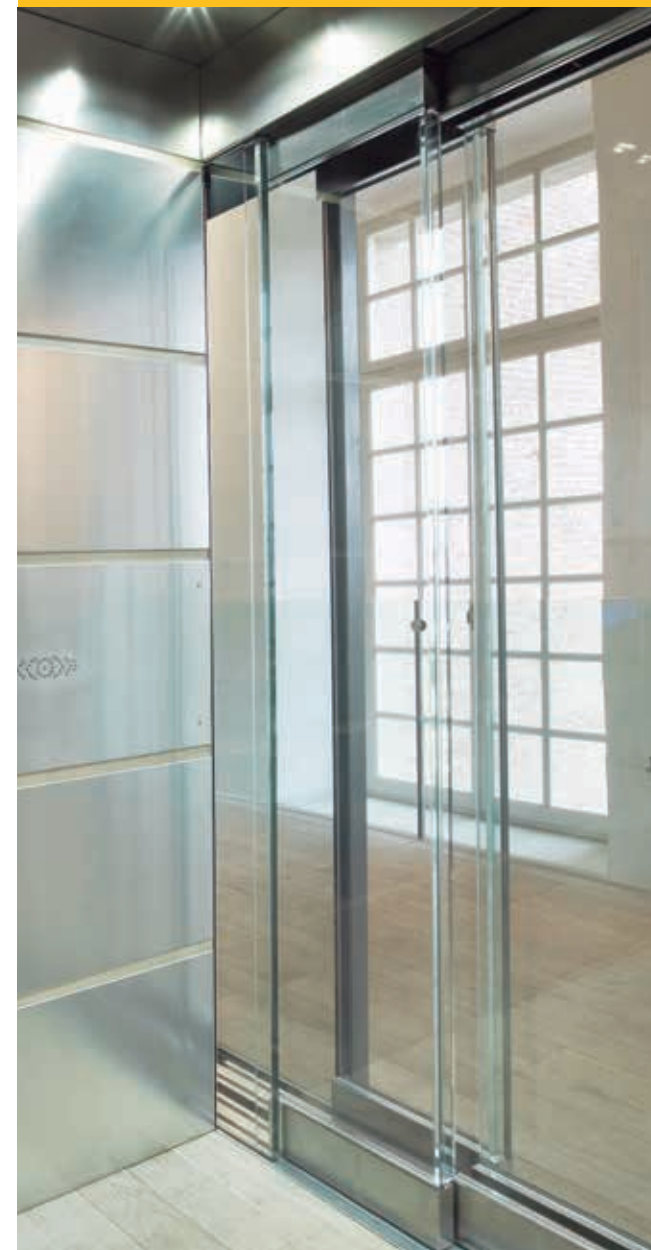
The machine has a long life cycle and repairs are virtually unnecessary.

Comfort:

It features a portico car frame with 2:1 suspension that guarantees a top quality ride during the trip.



_MACHINE ROOM LESS (MRL)
Also available with MR (Machine Room).



Technical characteristics:

- **Nominal speed** 1 m/s 3VF up to 2,5 m/s
- **Nominal load** up to 3.000 kg
- **Cable** 6,5 / 8 mm. (> 1.250 kg)
- **Suspension** 2:1
- **Standard headroom** 3.700 mm.
- **Standard pit** 1.200 mm.
- **Travel** up to 100 m.
- **Control unit** installed in door frame⁽¹⁾

⁽¹⁾Automatic doors with frame of 120 mm.

Q (kg)	LOW PIT EN81-21		LOW HEAD EN81-21	
	Low Pit (mm)	Required headroom (mm)	Required pit depth (mm)	Low Head (mm)
180-450	320	3320	640	2550
630	320	3320	695	2650
1000	670	3200	700	3200
1250	670	3200	700	3200
1600	400	3300	700	3300
2000	1020	3700	1020	3700
2500	1020	3700	1020	3700
3000	1020	3700	1020	3700

Single-phase plug 220V.

Q (Kg)	Rated speed recommended (m/s)	Travel máx. (m)
320	Up to 0,8	30
450	Up to 0,6	30
630	Up to 0,3	30

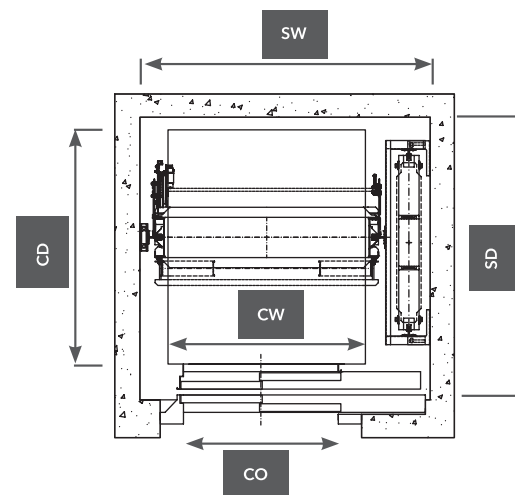
SW Shaft Width

CD Car Depth

SD Shaft Depth

CO Car Opening

CW Car Width

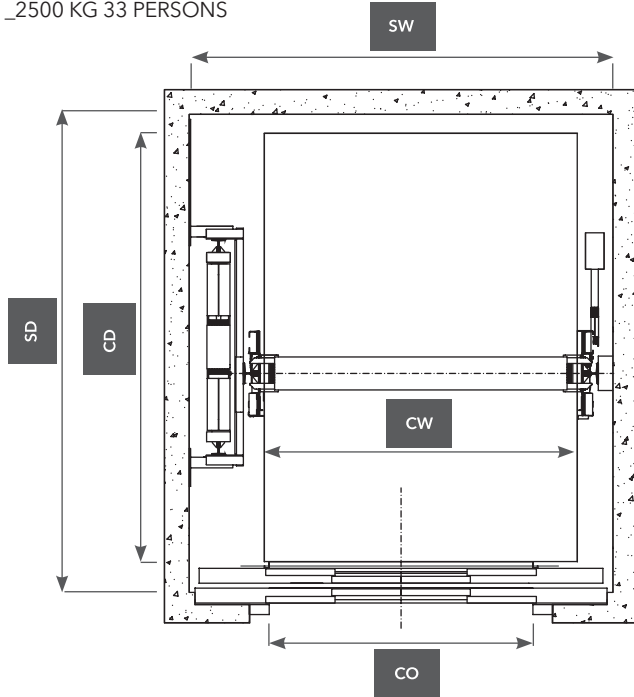
_DRAWING OF LANDING

Q (kg)	SW	SD	CW	CD	CO
180	1310	960	750	750	700
225	1310	1100	750	870	700
320	1400	1300	900	1000	700
450	1500	1460	1020	1210	800
630	1600	1660	1120	1410	800
800	1930	1750	1300	1500	900
1000	1600	2350	1100	2100	900
1125	2000	2350	1250	2100	1000
1250	2050	2350	1300	2100	1000
1600	2250	2500	1500	2250	1200
2000	2150	3050	1500	2700	1300
2500	2650	3050	1800	2700	1600
3000	2750	3050	1900	2700	1600

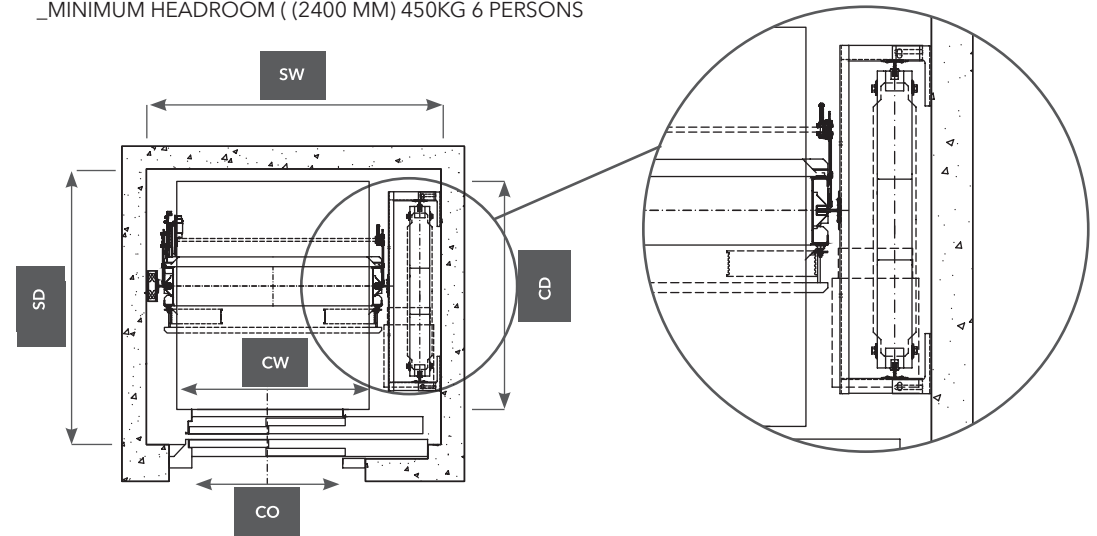
SW Shaft Width CD Car Depth
SD Shaft Depth CO Car Opening
CW Car Width

_DRAWING OF LANDING

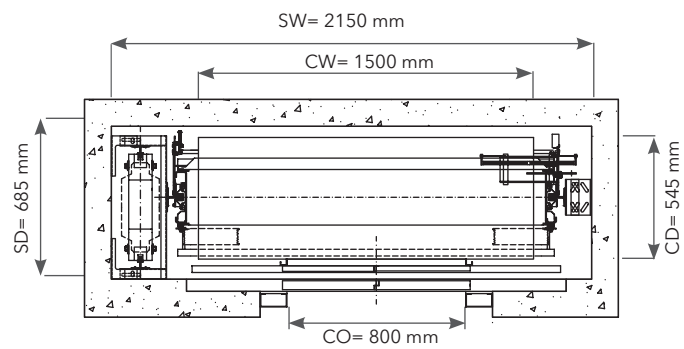
_2500 KG 33 PERSONS



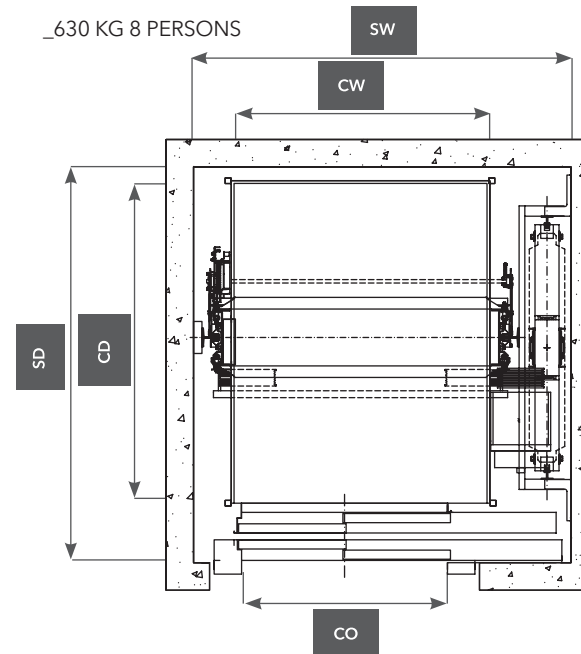
_MINIMUM HEADROOM (2400 MM) 450KG 6 PERSONS



_MINIMUM STANDARD SHAFT



_630 KG 8 PERSONS



OPTIMUS GEARLESS

The machine room-less electric lift the best optimizes available shaft.

With **Raloe's Optimus**, the required space is no longer the critical detail that needs to be considered first when deciding whether to install an electric or hydraulic lift in an existing building. This electric lift uses the existing shaft equally efficiently as a hydraulic lift.

When an old building is being refurbished for new usage, many times the old lift is being replaced as well. While doing so, the goal is to make optimal use of the shaft and to create the largest possible car size. Where up until today a hydraulic lift had to be installed, the **Optimus now is providing a real alternative.**

The electric lift, which is available with or without machine room and comes with gearless propulsion, can also be used with a **singlephase current and merely requires 250mm space on the side of the rucksack frame.** Further space-optimization is guaranteed by mounting guidance and counterweight rails in the same layer.

ADVANTAGES

Flexibility:

Allows single, double and triple entrances. Ideal for projects with adjacent entrances 90°.

Single-phase:

Operating on a single-phase supply 220 V.

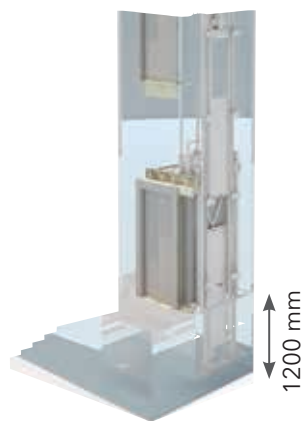
Optimisation:

Bancada de fácil montaje. Autoportante.

Adaptability:

Possibility of installing it with standard EN 81.21 to pit and headroom reduced.

_DIMENSION "0" WITH GEARLESS



With **OPTIMUS** at dimension 0, thanks to the minimum pit of 250 mm for 450 kg lifts, we can avoid ramps.



_MACHINE ROOM LESS (MRL)
Also available with MR (Machine Room).



Technical characteristics:

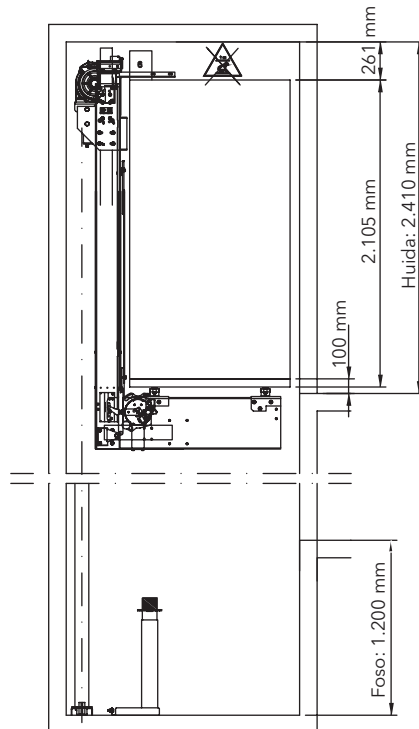
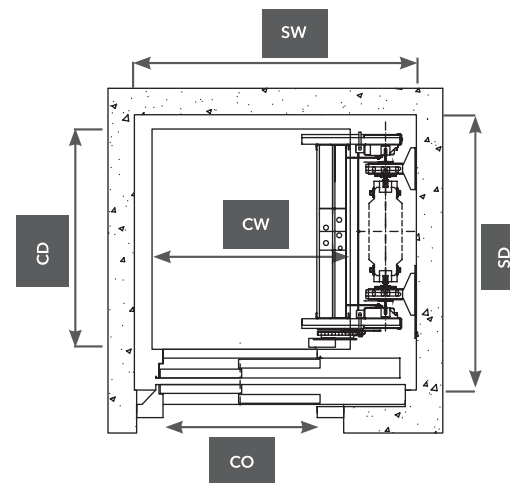
- **Nominal speed** 1 m/s > CONSULT
- **Nominal load** up to 1.250 kg
- **Cable** 6,5 Ø
- **Suspension** 1:1 up to 320 kg 2:1 (450 kg - 1.250 kg)
- **Standard headroom** 3.600 mm.
- **Standard pit** 1.200 mm.
- **Travel** up to 50 m.
- **Control unit** installed in door frame⁽¹⁾

⁽¹⁾Automatic doors with frame of 120 mm.

LOW PIT EN81-21		
Q (kg)	Low Pit (mm)	Required headroom (mm)
180-450	250	3250
630	270	3250
1000	500	3400
1250	500	3400

LOW HEADROOM EN81-21		
Q (kg)	Low Pit (mm)	Required headroom (mm)
Up to 630	300	2450

_OPTIMUS HDR
_HEADROOM FRONT VIEW 2410 MM

**_DRAWING OF LANDING**

Q (kg)	SW ⁽¹⁾	SD	CW	CD	CO
100	800	930	680	500	600
180	800	1150	680	720	600
225	1250	1000	850	790	700
320	1280	1250	900	1000	700
450	1400	1450	1020	1210	800
630	1500	1650	1120	1410	800
800	1810	1750	1300	1500	900
1000	1600	2370	1100	2100	900
1275	1800	2600	1200	2300	1100

⁽²⁾ For headroom inferior at 3150 mm, increase SW of 65 mm

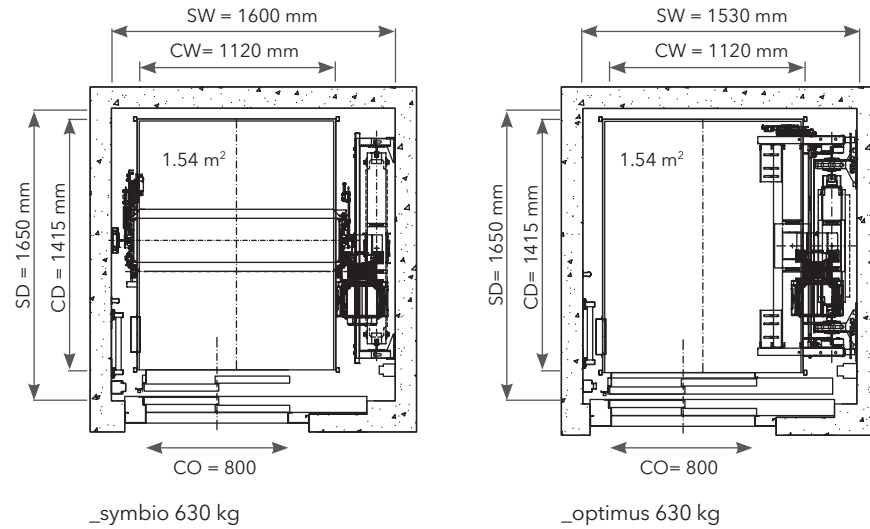
Single-phase 220 V

Q (Kg)	Rated speed recommended (m/s)	Travel máx. (m)
320 1:1	Hasta 0,5	30
320 2:1	Hasta 0,6	30
450	Hasta 0,5	30
630	Hasta 0,3	30

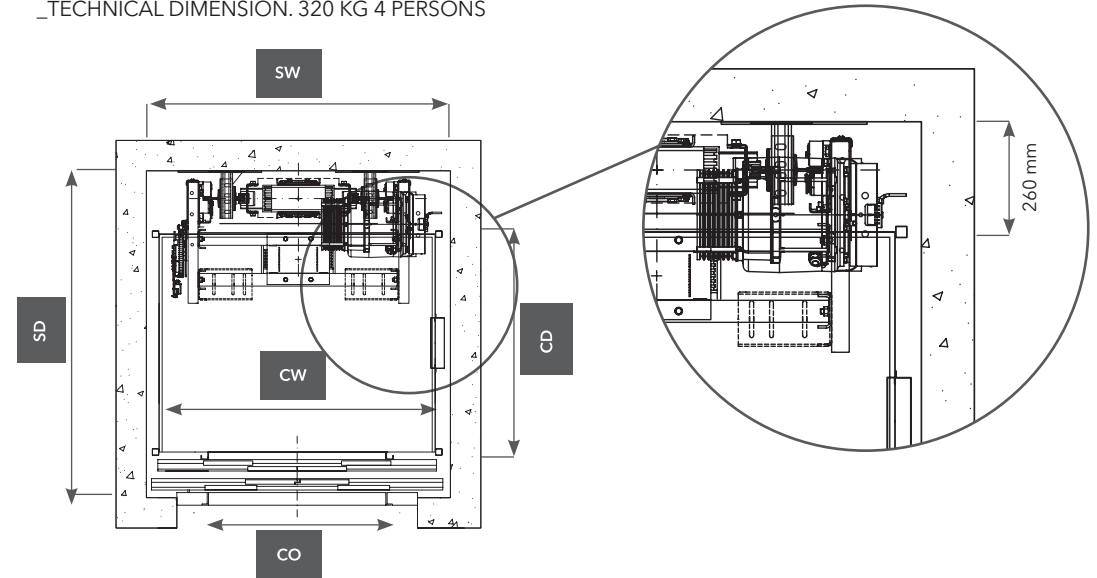
SW Shaft Width CD Car Depth
SD Shaft Depth CO Car Opening
CW Car Width

_DRAWING OF LANDING

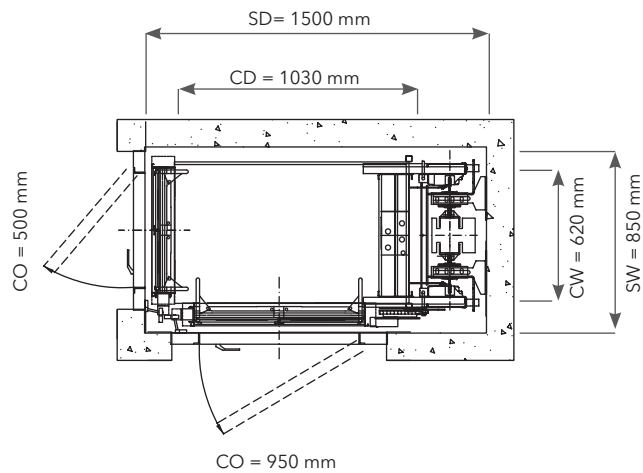
_BEST OPTIMIZATION AVAILABLE SHAFT



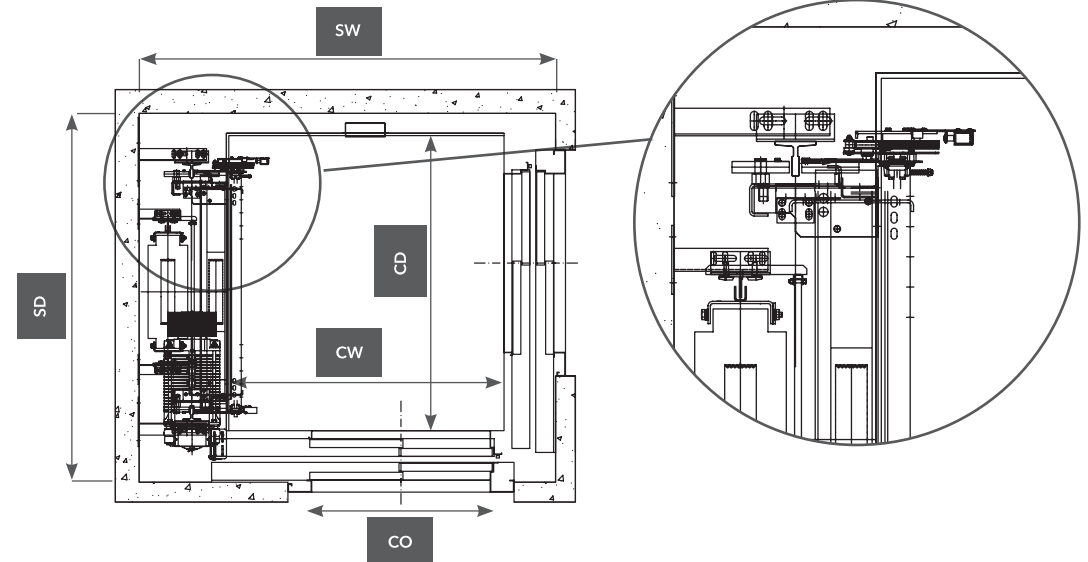
_TECHNICAL DIMENSION. 320 KG 4 PERSONS



_SPECIAL DOUBLE ENTRANCE 90°. 225 KG 2 PERSONS



_DOUBLE ENTRANCE 90°. 1000 KG 13 PERSONS





TRACTION LIFT 2V 3VF

WITH MACHINE ROOM

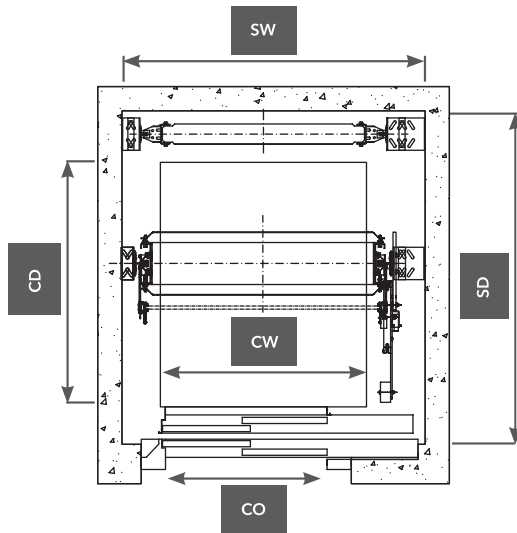
Conventional traction lift with 2 speeds (3VF) with machine room

Technical characteristics:

- **Nominal speed** up to 2,5 m/s
- **Nominal load** up to 3.000 kg
- **Standard headroom** 3.700 mm.
- **Standard pit** 1.200 mm.
- **Travel** up to 100 m.

SW Shaft Width CD Car Depth
SD Shaft Depth CO Car Opening
CW Car Width

DRAWING OF LANDING

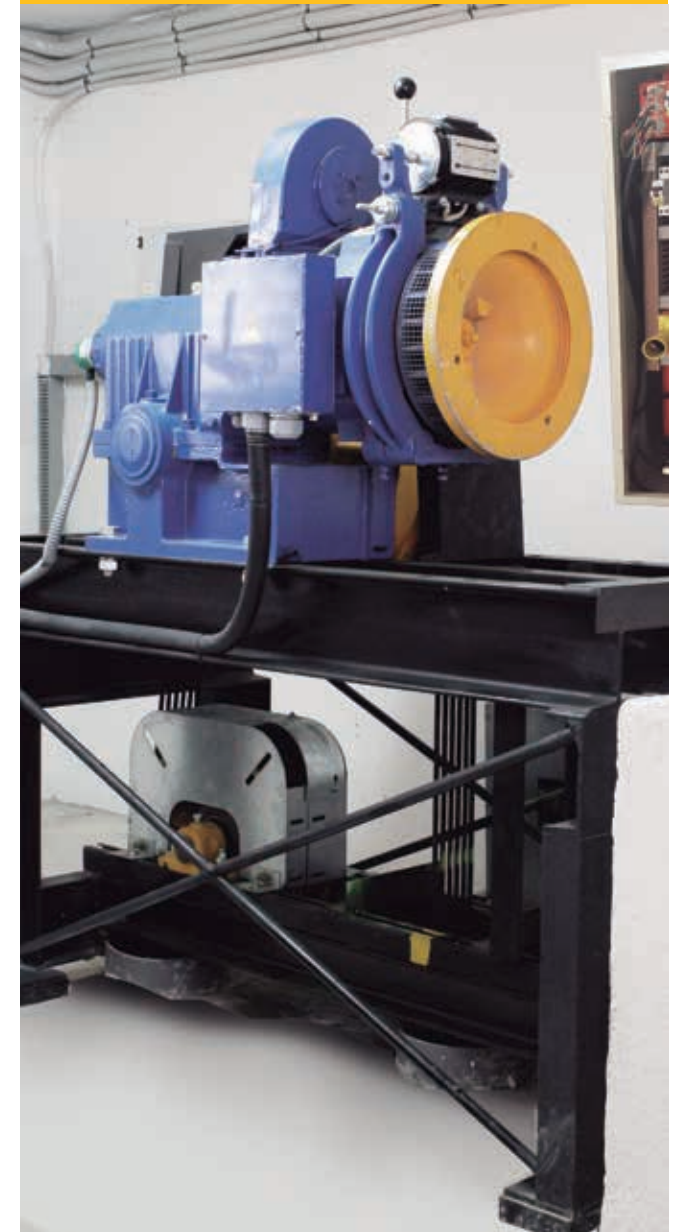
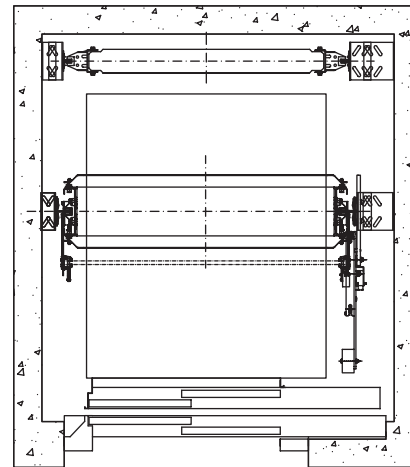


Q (kg)	SW	SD	CW	CD	CO
180	1100	1170	750	750	700 ⁽¹⁾
225	1100	1290	750	870	700 ⁽¹⁾
320	1350	1350	1000	900	700
450	1500	1650	1020	1210	800
630	1600	1850	1120	1410	800
800	1700	1950	1300	1500	900
1000	1800	2350	1100	2100	900 ⁽²⁾
1125	1950	2350	1250	2100	1000 ⁽²⁾
1250	2000	2350	1300	2100	1000 ⁽²⁾
1600	2200	2500	1500	2250	1200 ⁽²⁾
1800	2200	2800	1500	2500	1200
2000	2300	3000	1500	2600	1200
2500	2600	3100	1800	2700	1400
3000	3100	3300	1850	3000	1400

⁽¹⁾ Door opening 0 mm.

⁽²⁾ Lateral car frame.

Q (kg)	Nominal Output (kw)	Min. Headroom.(mm)	Min. Pit. (mm)
180	1.5 - 2.2	2550	250
225	1.8 - 2.2	2550	250
320	2.6 - 3.2	2550	250
450	3.4 - 4.4	2550	250
630	4.8 - 6.3	2650	300
800	6.6 - 7.3	2650	300
1000	8.1 - 8.8	2650	400
1125	11.4 - 15.8	2650	400
1250	12.9 - 17.3	2650	400
1600	14.3 - 17.3	2650	400
1800	13.9 - 15.4	3550	1250
2000	15.3 - 16.5	3550	1250
2500	18.3 - 19.45	3550	1250
3000	22.25 - 23.9	3800	1500





HYDRAULIC LIFT

At Raloe, we have developed an entire management and production system that makes it possible to adapt our proven designs to different lift shafts in existing buildings.

Installation of the tank within the pit:

We have configured a hydraulic machine room-less lift with superb features. The main difference to competitors is that we have added a control system with electronic valves. It is the perfect solution for buildings with 4-5 storeys.

ADVANTAGES

Custom-designed to meet your needs:

We tailor each lift to suit each different shaft.

Reduced pit and headroom:

Our lifts can be adapted to existing buildings according to the reduced pit and headroom standards.

Cabinets

Possibility of supplying.

Consumption:

Energy efficient, as it reduces consumption by up to 50% in comparison with conventional hydraulic lifts.

Comfort:

Excellent comfort level, equal to the electric VVVF lift.

Adaptability:

Easy control and maintenance.

Safety:

Automatic emergency system with a pressure relief valve, always active during the descent even in case of motor failure. Rupture valve is included.

Environmentally-friendly:

Eco-fluids with better environmentally friendly properties can be used.



Technical characteristics:

- Nominal speed	0,63 m/s up to 1 m/s
- Nominal load with MR or MRL	up to 1500 kg
- Tráfico medio	between 30 and 45 starts/hour
- Standard headroom	3500 mm.
- Standard pit	1200 mm.
- Travel	up to 25 m.

LOW PIT EN81-21		
Q (kg)	Low Pit (mm)	Required headroom (mm)
100	250	2550
225	250	2550
450	270	2550
630	270	2550
800	400	2550
1000	400	2550
1500	400	2550

Outside car height 2100mm

Cabinets

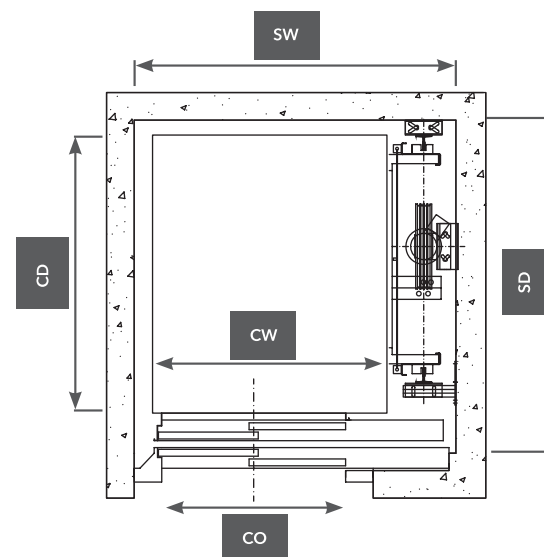
Type	Width (mm)	Depth (mm)	Height (mm)
TYPE 1	785	364	2052
TYPE 2	960	510	2.162
E650	1.000	650	2.200

Check compatibility of cabinet with tank.

SW Shaft Width CD Car Depth
SD Shaft Depth CO Car Opening
CW Car Width

_DRAWING OF LANDING

_WITH MACHINE ROOM

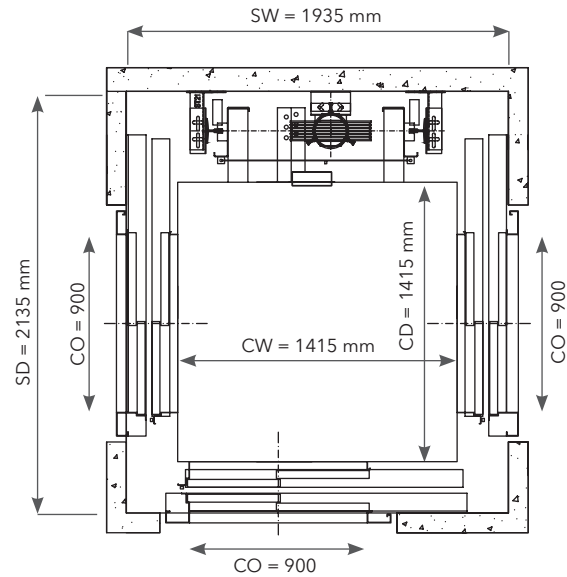


Q (kg)	SW	SD	CW	CD	CO
100	700	1210	580	500	500
180	750	1210	800	630	550
225	1000	1250	850	800	700
320	1300	1380	1000	900	700
450*	1400	1450	1020	1210	800
630	1550	1650	1120	1410	800
800	1750	1750	1300	1500	900
1125	1750	2400	1250	2100	1000
1250	1800	2350	1300	2100	1000
1350	1850	2450	1350	2200	1000
1500	2050	2450	1500	2200	1200
1600	2050	2500	1500	2250	1200

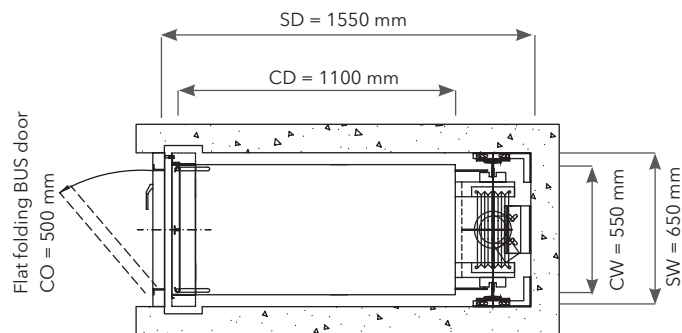
SW Shaft Width CD Car Depth
SD Shaft Depth CO Car Opening
CW Car Width

DRAWING OF LANDING

TRIPLE ENTRANCE. 800 KG 11 PERSONS



MINIMAL WIDTH. 100 KG 1 PERSON

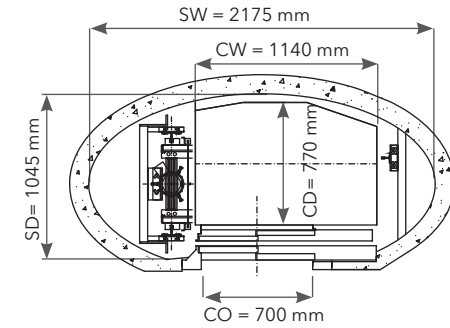


OTHER SOLUTIONS

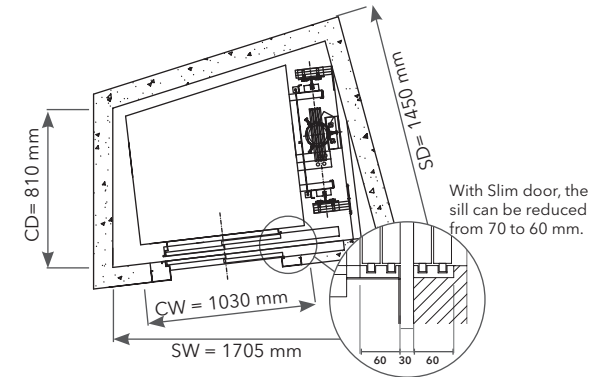
Buried piston



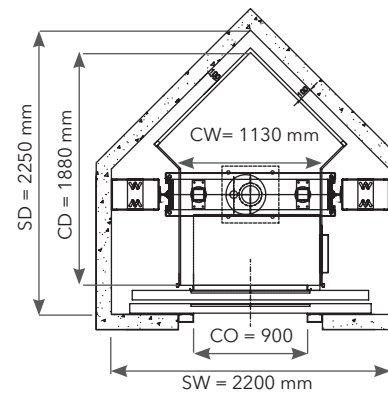
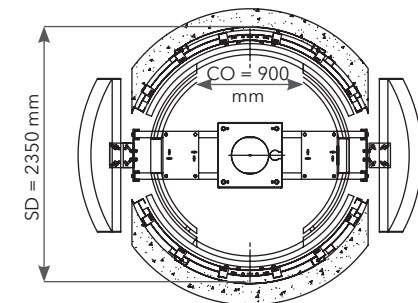
Special shaft 300 kg 4 persons



Irregular shaft 320 kg 4 persons



circular



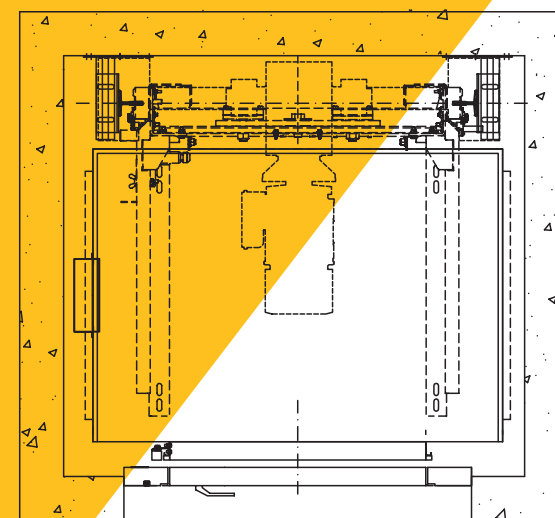
HOMELIFT

This is a personal lift that can be installed either in homes or at the workplace.

We offer two domestic lifts designed by our team of highly qualified professionals:

-Beltus, the electric domestic lift.

-MyDomestic, the hydraulic domestic lift.



BELTUS ELECTRIC HOMELIFT

ADVANTAGES

Maximum safety:

We have extensively studied its structure in order to guarantee the lift safety levels.

Decorative adaptability:

Beltus can be provide the same decoration as any other lift (car model, automatic doors, etc.).

Single-phase:

Operating on a single-phase supply 220 V.

Easy maintenance:

It is without cables. The toothed belt avoids the replacement due to roping.

Environmentally-friendly:

Without oil or bad smells.

Optimisation of space::

Best optimization available shaft.

Emergency:

We have equipped it with a rescue system that makes it possible to evacuate people in the event of a power failure.

Without machine room.

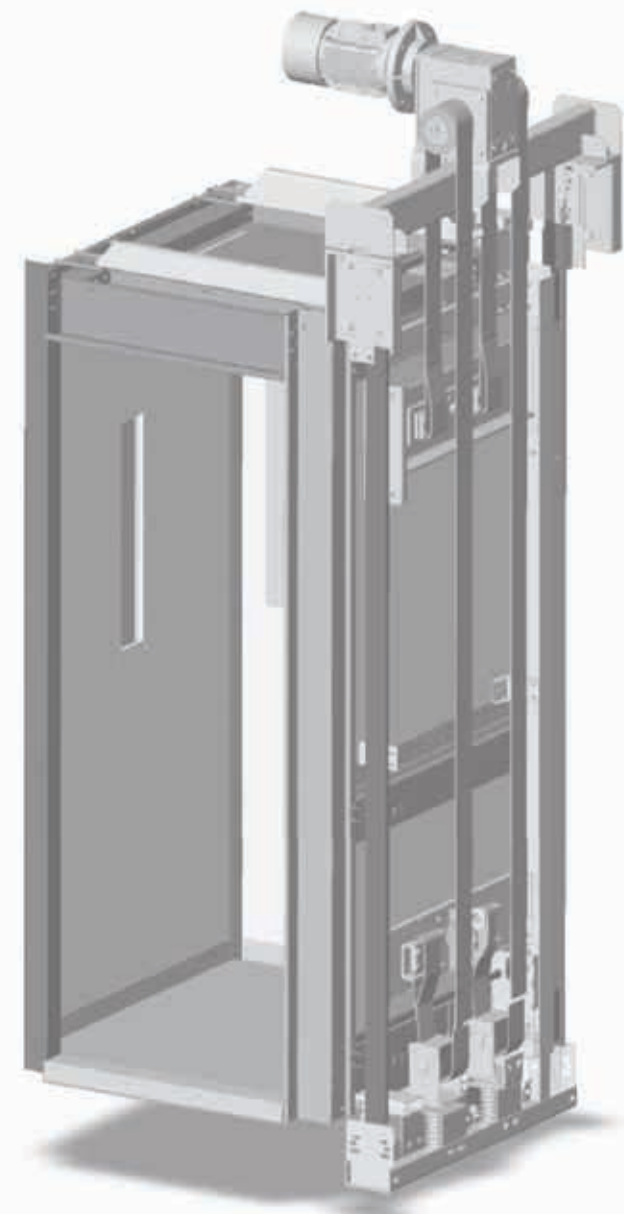
MAIN CHARACTERISTICS

The feature that differentiates our product from the other electric domestic lifts on the market is the use in **Beltus** of toothed belts instead of cables in order to eliminate the counterweight.

Toothed belts provide longer durability and lifetime to avoid thread galling and periodic replacements.

Furthermore, in **Beltus the space of the shaft is exploited to the full**: there aren't neither the counterweight nor the machine room.

The machine is always placed within the shaft without needing more space than hydraulic lifts. The frame is the same but has been adapted since the counterweight and the rope anchorage have been eliminated and the toothed belts fixed.



Technical characteristics:

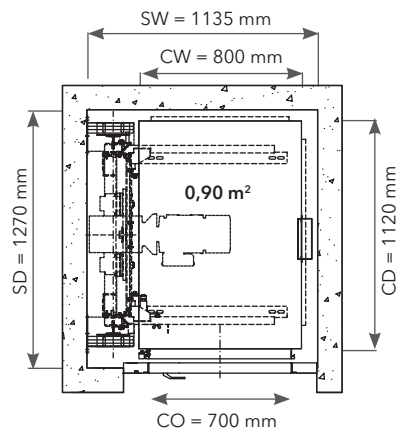
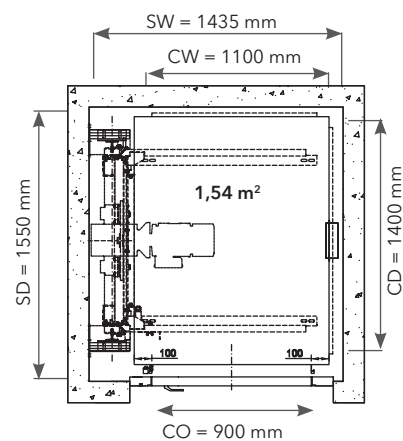
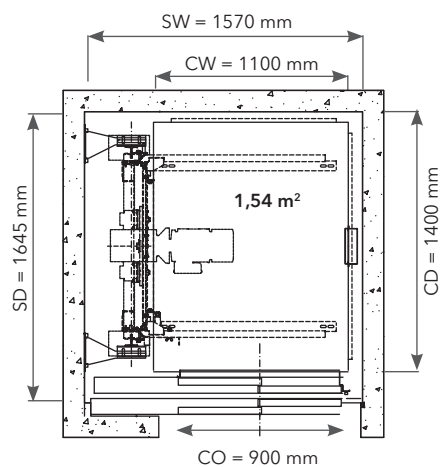
- **Nominal speed** 0,15 m/s
- **Nominal load** up to 385 kg
- **Output (single-phase)** 3.2 kW máx.
- **Minimum headroom** 2.600 mm.
- **Minimum pit** 100 mm.
- **Travel** 24 m.

_WITHOUT DOORS

Q (KG)	SW	SD	CW	CD	CO
180	1035	1170	700	1020	600
225	1135	1270	800	1120	700
300	1355	1350	1000	1200	800
350	1435	1350	1100	1200	900
385	1435	1550	1100	1400	900

Surfaces

Q (kg)	Surface	No. Persons
225	0,90 m ²	3
300	1,20 m ²	4
350	1,40 m ²	4
385	1,54 m ²	5

_DRAWING OF LANDING**_BELTUS 225 KG WITHOUT DOORS****_BELTUS 385 KG WITHOUT DOORS****_BELTUS 385 KG AUTOMATIC DOORS****_CERTIFICATE**

MYDOMESTIC HYDRAULIC HOMELIFT

The hydraulic equipment is exclusively designed for carrying people, providing an unprecedented level of comfort. Furthermore we guarantee a maximum of safety with reference to European Standards 81.41

In **MyDomestic**, the guide base-plate and the machine bed-plate have been modified, the rope anchorage removed and adjusted to the toothed belts.

Obligatory prefabricated cupboard or Machine room.

Cabinets



We have a preassembled KIT MHL-KOMPACT, which is a complete cabinet + main unit + electrical panel, already assembled, pre-wired, and tested from the factory. This makes commissioning easier (Plug & Play)

Cabinet model	Width (mm)	Depth (mm)	Height (mm)
KIT MHL-KOMPACT	500	250	1500
TIPO 3	700	400	1306

ADVANTAGES

Maximum safety:

We have extensively studied its structure in order to guarantee the lift safety levels.

Decorative adaptability:

Beltus can be provide the same decoration as any other lift (car model, automatic doors, etc.).

Single-phase:

Operating on a single-phase supply 220 V.

Optimisation of space::

Best optimization available shaft.

Emergency:

We have equipped it with a rescue system that makes it possible to evacuate people in the event of a power failure.

Without machine room.



SW Shaft Width CD Car Depth
SD Shaft Depth CO Car Opening
CW Car Width

Technical characteristics:

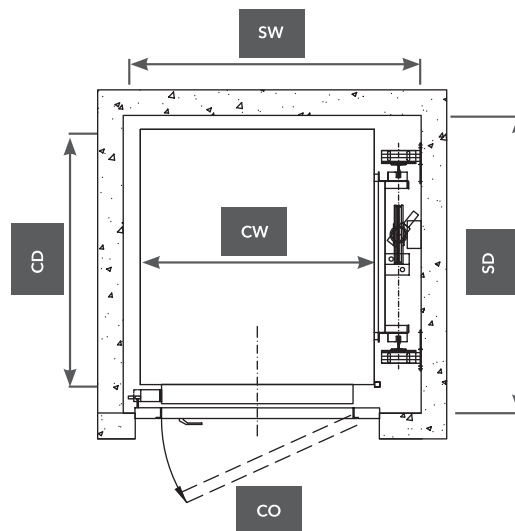
- **Nominal speed** 0,15 m/s
- **Nominal load** up to 500 kg
- **Output** 4.3 kW máx
- **Minimum headroom** 2.300 mm⁽¹⁾
- **Minimum pit** 100 mm⁽²⁾
- **Travel** 24 m.

⁽¹⁾ In case the car is supplied without doors.

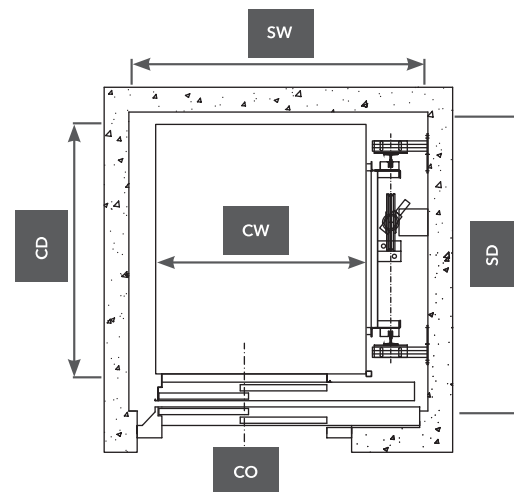
⁽²⁾ Up to 385 kg, minimum pit 100 mm. For 400 kg, 450 kg and 500 kg, minimum pit 200 mm.

Surfaces

Q (kg)	Surface
180	0,72 m ²
225	0,90 m ²
300	1,20 m ²
350	1,40 m ²
385	1,54 m ²
400	1,60 m ²
450	1,80 m ²
500	2,00 m ²

_DRAWING OF LANDING**_SEMI-AUTOMATIC DOOR**

Q (KG)	SW	CW	SD	CD	CO
180	1100	1100	800	900	700
225	1300	1100	1000	900	700
300	1300	1400	1000	1200	800
350	1400	1400	1100	1200	900
385	1450	1600	1100	1400	900
400	1400	1650	1100	1450	900
450	1580	1670	1200	1500	900
500	1580	1770	1200	1600	900

_AUTOMATIC DOOR

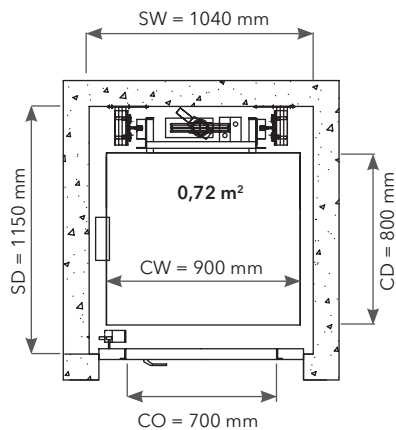
Q (KG)	SW	CW	SD	CD	CO
180 ⁽³⁾	1150	1150	800	900	700
225	1250	1250	900	1000	700
300	1400	1450	1000	1200	800
350	1400	1450	1100	1200	800
385	1550	1650	1100	1400	900
400	1480	1670	1100	1450	800
450	1580	1720	1200	1500	900
500	1580	1820	1200	1600	900

⁽³⁾ Door with 3 panels

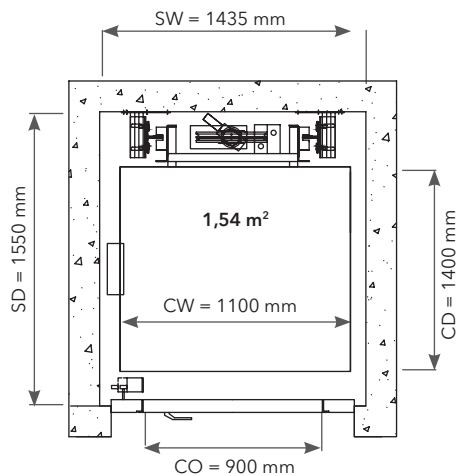
SW Shaft Width CD Car Depth
SD Shaft Depth CO Car Opening
CW Car Width

_DRAWING OF LANDING

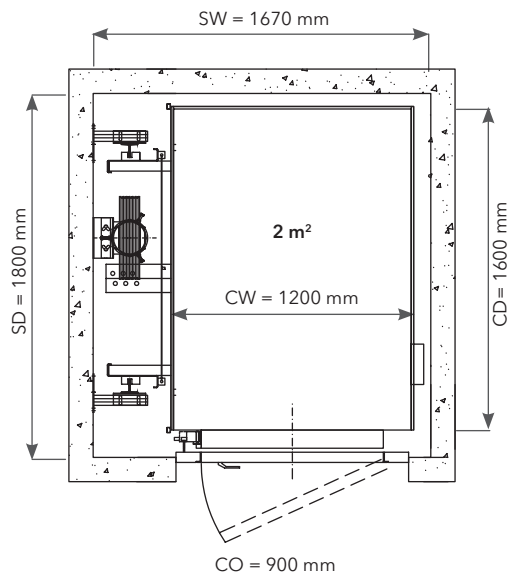
_180 KG CAR 900 X 800 MM



_385 KG CAR 1100 X 1400 MM



_500 KG CAR 1200 X 1600 MM



_CERTIFICATE



SINGLE-PHASE (0,3 M/S)

In order to satisfy specific demands, such as homelift single-phase 0,30 m/s., we already develop a solution through electrical panels which include a frequency converter, which transforms the single-phase voltage into 3-phase power for the central motor.

At the same time, the entire motor unit control is performed during the upward movement, managing to reduce the starting consumption and regulate the acceleration and deceleration ramps in an optimal way.



The lowering movement is done through 2 speed valves with a Blain cushioned stop.

Finally, we add a double safety valve, consistent in additional lowering valve connected to the final hydraulic central circuit.

With this combination we get a great comfort both uphill and downhill.

Depending on the load and the travel we can use 3, 4, 5, 6 or 6,5 HP motors.



PARKINGLIFT

A car lift featuring the best brands and Raloe's engineering.

ADVANTAGES

Safety:

In the event of an electrical failure, the lift descends to the next floor enabling the vehicle to exit.

Flexibility:

Possibility of integrating any type of control panel.

Easy installation:

The design aims to reduce the time taken to install the lift.

Stability:

It features bracing to the car and frame, providing the structure with more rigidity and stability.

Parking assistance system:

Easy vehicle positioning (optional). At the upper part of the door, the displays show if the car is positioned correctly.

Drainage of snow water:

The snow located at the car wheels is removed, avoiding the rust of the car platform

SW Shaft Width CD Car Depth
SD Shaft Depth CO Car Opening
CW Car Width

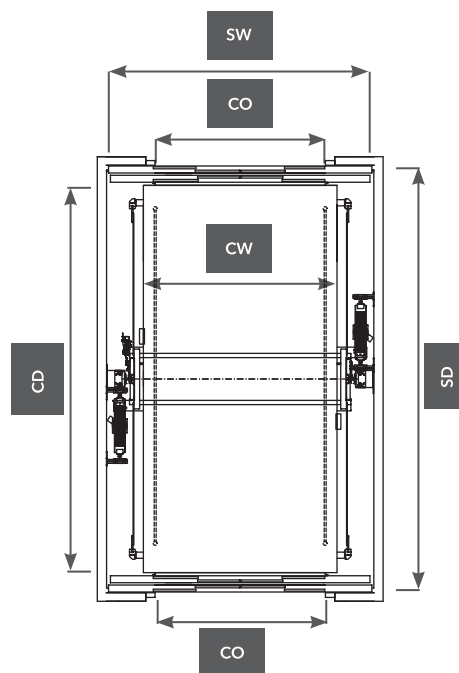
Technical characteristics in compliance standard EN81.20:

- **Nominal speed** up to 0,5 m/s
- **Nominal load** up to 5.500 kg
- **Car opening** from 2.200 to 2.500 mm.
- **Suspension** 2:1
- **Travel** up to 20 m.
- **Standard headroom** 3.600 mm.
- **Standard pit** 1.200 mm.

Q (kg)	Speed (m/s)	Output (HP)	Min. Headroom (mm)	Min. Pit (mm)
3000	0,1 - 0,5	10,5 - 40	2900	900
3500	0,1 - 0,5	10,5 - 50	2900	900
4000	0,1 - 0,5	13 - 60	2900	900
5000	0,1 - 0,4	15 - 60	2800	900
5500	0,1 - 0,4	20 - 70	2900	1000



_DRAWING OF LANDING



Q (kg)	SW	SD	CW	CD	CO
3000*	3250	5090	2300	4600	2200
3500	3450	5400	2500	5000	2200
4000	3550	5900	2600	5500	2200
5000	3950	6400	2850	6000	2500
5500	4000	7500	3150	6750	2500

*For this load 6 HC doors are necessary.

_CERTIFICATE

We possess all necessary certificates for our **ParkingLift** that makes it possible for us to optimise the whole lift system for the required load.

Standard exception for an area greater than in table 6 in standard EN 81.20



FREIGHT LIFT

This lift is designed for the transport of goods and people.

ADVANTAGES

Safety:

In the event of an electrical failure, the lift descends to the next floor enabling the passenger to exit.

Flexibility:

Possibility of integrating any type of control panel.

Easy installation:

The design aims to reduce the time required to install the lift.

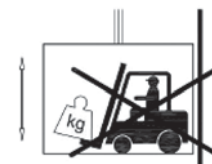
Stability:

It features a bracing of the car and frame, providing the structure with more rigidity and stability.

_USE OF THE FREIGHT LIFTS

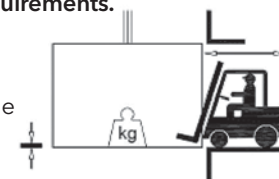
Cabin for low load requirements.

- Even load distribution.
- Introduced in cabin manually or through hand pallet truck.
- The weight of introduced packages will be not greater than Q/4.



Cabin for medium-high load requirements.

- Possibility of heavy load (occasionally).
- A trolley can be introduced in the cabin.



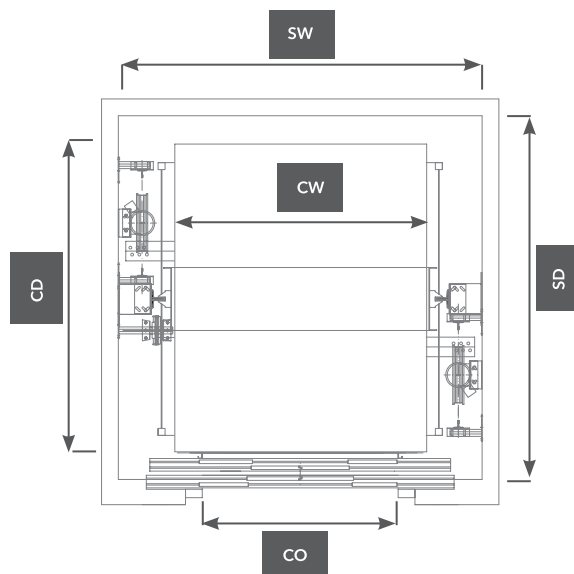
SW Shaft Width CD Car Depth
SD Shaft Depth CO Car Opening
CW Car Width

Technical characteristics:

- Nominal speed up to 0,5 m/s
- Nominal load up to 10.000 kg
- Max. Car height up to 3.000 mm
- Free height doors from 2.000 to 2.800 mm
- Suspension 1:1 - 2:1
- Travel up to 20 m.
- Standard headroom 3.600 mm.
- Standard pit 1.200 mm.
- Direct draft pistons up to 3,5 m.
- Telescopic guide chain pistons 1:1 from 3,6 to 10 m.

Q (kg)	Speed (m/s)	Output (HP)	Min. Headroom (mm)	Min. Pit (mm)
2000	0,1 - 0,5	6,5 - 30	2900	900
2500	0,1 - 0,5	8 - 40	2900	900
3000	0,1 - 0,5	10,5 - 40	2900	900
3500	0,1 - 0,5	10,5 - 50	2900	900
4000	0,1 - 0,5	13 - 60	2900	900
5000	0,1 - 0,4	15 - 60	2900	900
6000	0,1 - 0,4	20 - 60	2900	900
8000	0,1 - 0,4	25 - 80	3200	1200
10000	0,1 - 0,4	30 - 100	3200	1200

_DRAWING OF LANDING



Q (kg)	SW	SD	CW	CD	CO
2000	2600	2500	1800	2200	1500
2500	3000	2500	2200	2200	1800
3000	3150	2850	2200	2500	1900
3500	3200	3150	2250	2800	2200
4000	3200	3550	2250	3200	2200
5000	3450	3850	2500	3500	2400
8000	4000	4500	2800	4500	2500
10000	4250	5000	3000	4600	2600

_THRESHOLDS



Reinforced aluminium threshold (Standard)

Total load: 4800 kg.

Load in support area: 1200 kg



Solid threshold (optional)

For major loads.



STRUCTURES

The structures for the Lifts and the Domestic Lifts give us flexibility, by eliminating the architectural barriers and giving solutions for the total accessibility.

ADVANTAGES

The works and assembly time are reduced by over 60% on an installation with traditional construction system, with a clean, fast and quiet product.

Absolutely respectful with the environment, both in their assembly process and industrial development.

Its easy assembling, makes this product highly simple to work, complying with the higher security standards.

CHARACTERISTICS

Multi-purpose technical solution for every building, they can be adapted to the different constructive requirements. TC series are designed to be integrated in the existing building and its environment.

_Types of enclosures:



Transparent butyral glass



Frosted butyral glass



Blind plate



Perforated plate



Total glass

_Types of brackets:



Clap



Button Glass

_Options and accessories:



Ceiling (metal sheet or glass)



Door over door (metal sheet or glass)



Handrail



Ventilation

_Colors:

RAL 9002	RAL 1015	RAL 7032	RAL 7001	RAL 8003
RAL 3004	RAL 6005	RAL 5003	RAL 9005	OXIRON





TREPPENLIFTE

VERTICAL ELEVATOR STAIRLIFT

Raloe provides a product focused on overcoming architectural barriers that make access difficult or complicate full mobility at home to disabled people with wheelchair.

It is the **Stairlift**.

This model is adapted to any site and fully integrated in the environment.

ADVANTAGES

Security:

It is provided with protection handrails and ramps positioned before of the platform displacement in order to avoid falling down; in the same way there are handrails and a non-slip floor as additional measures to prevent falls.

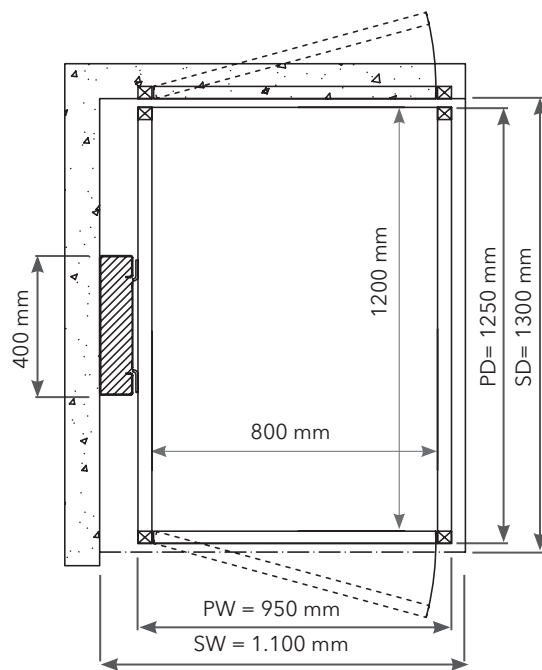
Easy installation:

The design simplifies the installation.

Technical characteristics:

- **Max. Speed** up to 0,10 m/s
- **Nominal load** up to 300 kg
- **Travel** up to 3 m.
- **Supply** single-phase 220 V.
- **Consumption** 1 kW

_DRAWING OF LANDING



Standard finish: primer.
Optional finish: stainless steel.

OTHER PLATFORMS

Load platforms:

Just to move goods with defined stop levels. High adaptability and options depending on the use.

CHARACTERISTICS

- Double cable or traction chains + double security cable.
- Security mechanical block to pit access.
- New wall options of the platform (with or without ceiling)
- Doors with lift lock (without need of cam)
- New security switches at control panel.
- Inspection operating panel
- Pit Stop

Dumbwaiters or service lifts:

Apparatus manufactured under European Directive 2006/42/EC on machinery and its transposition to Royal Decree 1644/2008 on marketing and the putting into service of machinery.

The MH-1 series, in its 50 kg and 100 kg versions, is intended for the vertical transport of small loads in places such as restaurants, hotels and offices, as well as in clinics and hospitals.

Thanks to its reduced dimensions, these appliances can be installed in small spaces and fix guide supports directly a wall.



GLASS PANEL CAR

We provide a wide range of panoramic cabin shapes with one or more glass walls.

PANORAMIC MODELS:

_MATRIX

Squared Shape Cabins with different variations in the arrangements of the glass.

Models M100, M200, M300: Joints between panes framed with crystals.

Models M100d, M200d, M300d: Joints between panes without profiles.



M100



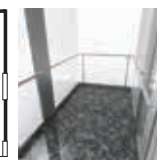
M100d



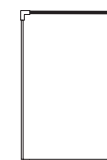
M200



M200d



M300



M300d

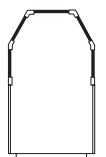


_VECTOR

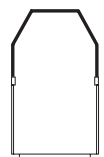
Front of polygonal cabin or curved, with or without joints between glasses.

Models V100, V300: Joints between panes framed with crystals.

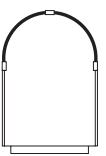
Models V100d, M300d: Joints between panes without profiles.



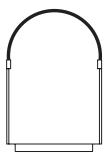
V100



V100d



V300



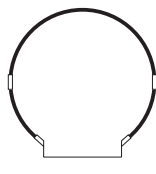
V300d

**_CENTURY**

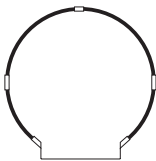
Completely Curved glazed Cabins.

Models C100: Joints between panes framed with crystals.

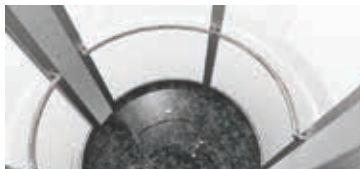
Models C200: Joints between panes without profiles.



C100

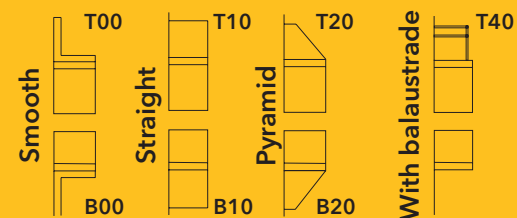


C200

**DOMES:**

Design of Domes adhere to spaces disponibility and elevators configuration. All the designs must be on request.

Maximum domes high and balaustrades on request.

Models:

CAR MODELS:

L01



Walls



F0190 Finn Beech
Laminated

Stainless steel omega profile



Floor



Rubber circles black

L02

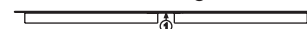


Walls



F8841 White Ash
Laminated

Between slats straight



Floor



Rubber circles black

CH01



Walls



Water blue RAL 5021
Painted plate

Slat no separation



Floor



Rubber circles black

S01

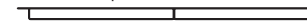


Walls



Skinplate White

Slat no separation



Floor



Rubber circles black

L03

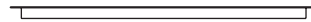


Walls



F6307 Burnt Strand
Laminated

Smooth panel



Floor



Rubber circles black

L04



Walls



F1139 Cherry tree
Laminated

Smooth panel



Floor

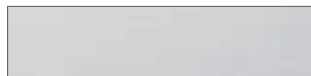


Rubber circles black

I01



Walls



Satin Stainless Steel

Between slats straight



Floor



Rubber circles black

Quartz



Walls



Red RAL1586
Tinted Glass

Smooth panel



Floor



Anti slip rubber grey

CAR FINISHES

Walls

Skinplates



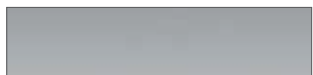
White



Cream



Grey



Stainless Steel



Simil stainless



Blue

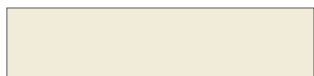


Black

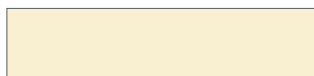
Painted Plate



White RAL 9016



White Pearl RAL 1013



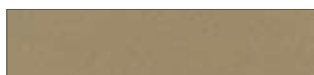
Cream RAL 9001



Grey RAL 7032



Beige RAL 1019



Beige Pearl RAL 1035



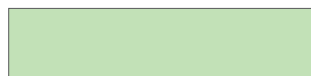
Metallic grey RAL 9006



Light Grey RAL 9022



Dark Grey RAL 7010



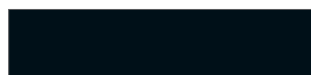
Green RAL 6019



Water blue RAL 5021



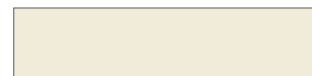
Pigeon blue RAL 5014



Black RAL 9005

Tinted glass

Mate



White Pearl RAL 1013



Bronze



Green RAL 8615



Blue RAL 7000



Silver

Gloss



Pure White RAL 9003



Light Brown RAL 1236



Dark Brown RAL 8017



Red RAL 1586



Orange RAL 2001



Black RAL 9005



Metallic Grey RAL 9006



Aluminum RAL 9007



Green RAL 8615



Green Pistachio



Blue RAL 5002



Black Starlight RAL 0337

Stainless Steel



Satin



Polished



Leather



Canvas



Linen

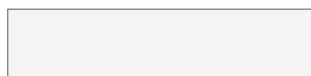


Checks



Gold

Laminated



F2274 White Polar



F2273 Seringa



F2833 SandStone



F2200 Dark Chocolate



F7884 China Blue



F2478 Bermuda



F1997 Oceano



F7927 Folkestone



F7837 Graphite



F8975 Patina Brush



F8841 White Ash



F0190 Finn Beech



F1139 Cerezo



F4062 Smoked Oak



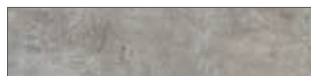
F8849 Natural Teak



F8848 Blackened Legno



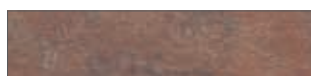
F6307 Burnt Strand



F8830 Elemental Concrete



F8833 Elemental Graphite



F8832 Elemental Corten

Gloss



F3091 Crystal White



F7912 Storm



F7914 Marine Blue



F1238 Carnaval

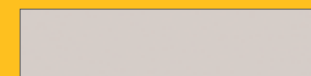


F6903 Cassis

Colors shown may vary from the actual color depending on the computer monitor settings or the printing conditions.

NOT IN COMPLIANCE WITH THE STANDARD EN 81.20

Melamin



Cream



Grey



Chocolate



Green



Blue



Cervino Pine tree



Beech



Cherry tree



Habana Linen



Dark Oak

CAR FINISHES

Floors

Rubber circles 4,5 kg/m²

Grey



Black

Anti slip rubber 4,5 kg/m²

Beige



Sand



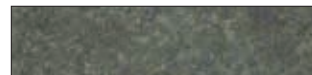
Oak



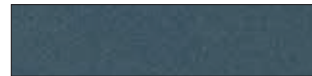
Grey



Grey granit



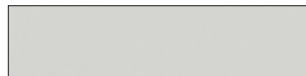
Grey concrete



Blue



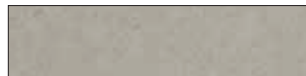
Black

Artificial stone 49 kg/m²

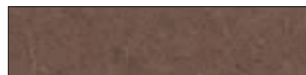
White North



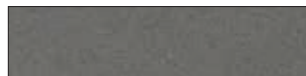
Phoenix



Royal Reef



Iron Bark



Grey Expo



Concrete Spa



Merope



Black Starlight

Natural granite 56 kg/m²

White Crystal



Pink Porriño



Grey Perla



Grey Quintana



Andromeda



Shivakashi



Juparana colombo



Paradiso bash



Light Blue Labrador



Dark Blue Labrador



Black South Africa

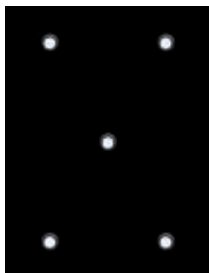


Intense Black

Metallic floor

Aluminum checkerboard 6 Kg/m²Stainless steel 12 Kg/m²Steel durbar plate 36 Kg/m²

Ceiling



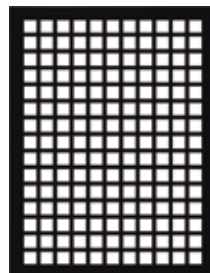
LED spots



LED spots curved



Panel LED



Mosaic



Stones



Mondrian



Brics



Natura

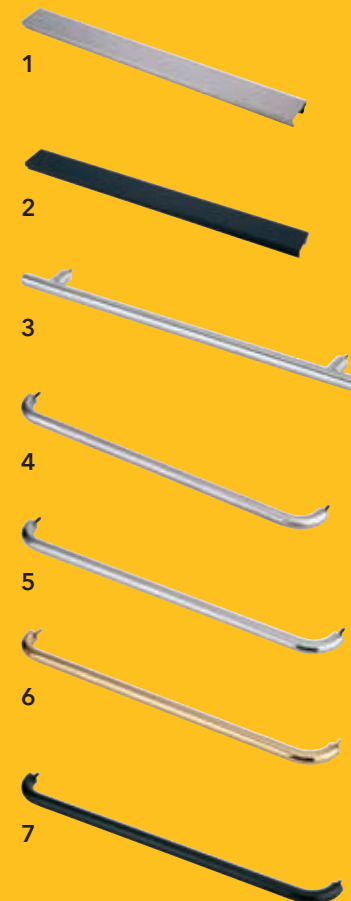


Frame



Tinted glass

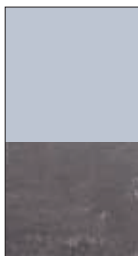
Pasamanos



1. Rectangular stainless steel
2. Rectangular skinplate
3. Straight tubular polished St. Steel
4. Curved tubular satin St. Steel
5. Curved tubular polished St. Steel
6. Curved tubular gold
7. Curved tubular painted black

CAR FINISHES

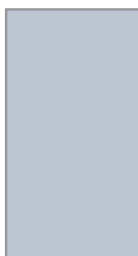
Mirror



1/2



Mirror slat



Full mirror

Mirror finishing: silver. Other finishing: bronze, white or aged, CONSULT.

Doors

Automatic door



Primed
Stainless steel



Big vision panel

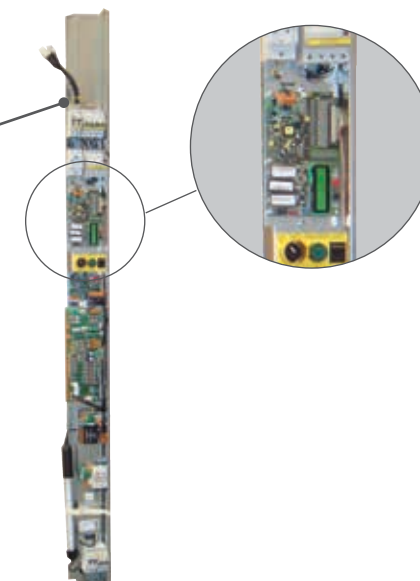


Folding door big
vision panel



Complete glass stainless
steel frame

Control panel inside frame door



Semiautomatic door



Vision panel



Big vision panel



Complete glass

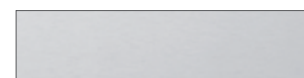
Door finishes



Grey RAL 7032



Leather



Satin



Gold

Availability of different RAL colours. Please ask.

Operating panels

Car

_Standard



_Lighting



_Epsilon



_Glass



_Type handrail (EN81.70)



Landing



With engraving
on steel plate



With transparent
plate

Push button



Bas 120



Bas 120 Black



RT42



MD7



Epsilon



B 50 Q

Display

MINI LCD



Display E-3"

LCD



Display E-5,7"

TFT



Color CS-2,8"



Color CS-5,6"



Color E-5,7"

Length 1960 mm

Standard only for lifts. For
Homelift, will go without
display.

QUALITY, OUR GOAL

Raloe's quality policy has as objective the continuous improvement and the following measures have been established to ensure its fulfillment:

_Ensure the customers satisfaction and the full compliance with product and activity standards, providing the best solution to suit their requirements.

_Guarantee to provide our team the level of training necessary for the development of the tasks required for the position.

_Provide appropriate working conditions to ensure worker satisfaction and safety.

_Improve continuously the efficiency of our Quality Management System.

_Achieve the level of return deemed necessary to maintain the organizational structure and to continue to invest in R & D, new technologies and workers' training, to be in a better position to fully satisfy the professionals of the lifts sector.

Offering high standards services using the best technological solutions which guarantee the product durability and strict compliance with technical and safety requirements.

The German certification authority TÜV Rheinland Service GmbH for lifts and security elements ensures the quality of our products according to the **European Lifts Directive 2004/33/UE, Annex XI, Module H1.**

STANDARDS

At Raloe, we have spent the last few years improving and refining our lifts as well as creating all types of solutions for different shafts. Today we have over 8 exception certificates as a result of our policy of tailoring each installation to individual needs.

Certificates

_Standard UNE EN ISO 9001:2008

_Directive of elevators 2014/33/UE, appendix XI, module H1.



Directive of elevators 2014/33/UE, appendix XI, module H1

EN 81.20 - 81.50	Security guideline for construction and installation of lifts.
EN 81.21	Security guideline for construction and installation of lifts. Passenger and freight lifts. Part 21: New passenger and freight lifts in already existing buildings.
EN 81.28	Remote alarm on passenger and goods and passenger lifts, especially those covered by the EN 81 Standards.
EN 81.58	Specification for the test method to determine the fire resistance test of the landing doors ⁽¹⁾ .
EN 81.70	Minimum requirements for the safe and independent access and the use of the lifts by disabled persons (Addenda included in standard). This norm proposes 3 different levels of accessibility: type 1, type 2 y type 3 ⁽²⁾
EN 81.71: 2005	Particular applications to passenger lifts and goods passenger lifts - Part 71: Vandal resistant lifts.
EN 81.72	Security guideline for construction and installation of lifts. Particular applications for the passenger lifts and passengers and freight lifts. Part 72: Firefighting lifts
EN 81.73	Security guideline for construction and installation of lifts. Particular applications for the passenger lifts and passengers and freight lifts. Part 73: Behaviour of lifts in the event of fire
EN.81.76	Security guideline for construction and installation of lifts. Particular applications for the passenger lifts and passengers and freight lifts. Part 76: Evacuation of disabled persons using lifts.
VDI 4707	Energy efficiency of lifts.
VDI 2566	Acoustic design for lifts without machine room

Exceptions of adapted norms of directive 2014/33/UE

- _Car lift with area greater than.
- _Installation of 6,5 mm supporting rope.

BELTUS EC Examination of the Directive 2006/42/CE type for electrics platforms.

IMQ certificate No. 50AQ00041

This is a personal lift that can be installed either in homes or at the workplace. The electric equipment is exclusively designed for carrying people, providing an unprecedented level of comfort.

MYDOMESTIC EC Examination of the Directive 2006/42/CE type for hydraulics platforms.

IMQ certificate No. 50LR00058

This is a personal lift that can be installed either in homes or at the workplace. The hydraulic equipment is exclusively designed for carrying people, providing an unprecedented level of comfort.

Conforms to the provisions of Directives:

2006/95/CE Low Voltage Directive.

2004/108/CE Electromagnetic Compatibility Directive

Harmonised Standards:

UNE-EN81.41 Vertical platforms for use by disabled people.

UNE-ENISO12100-1

UNE-ENISO12100-2

UNE-ENISO14121-1

UNE-EN60204-1

Components Regulation Certificates Directive 2014/33/UE

- _ Landing door locks.
- _ Parachute valve.
- _ Parachute.
- _ Speed limiter.
- _ Safety circuit.
- _ UCM.

Other components certifications 2014/33/UE

- _ Fire resistance test for lift doors according to EN 81.58 ⁽¹⁾

Tipo	Term	Period (min.)	Explanation
Integrity	E (PF)	30, 60, 120 (others)	The non-presence of flames on the opposite side of the door. Nomenclature: E-XXX (EN 81-58), PF-XXX (Spain, France, Belgium and UK), A-XX (Switzerland)
Isolation	EI (RF)	30, 60, 120 (others)	The average temperature is measured with thermocouples on the opposite side of the door. Nomenclature: EI-XX (EN 81-58), RF-XX (Spain and UK), REI-XX (Italy), A-XX (Sweden), EI-XX (Russia) and F-90 (Germany).
Radiation	EW	30, 60, 120 (others)	The non-radiation of the door is measured at a point located at one meter of distance from the centre of the door.

- _ Hydraulic Hose Test Certificate.
- _ Traction cables certifications.
- _ CE declaration reg. Car manufacturing.
- _ CE declaration reg. car frame manufacturing.

Subjected to structural tests in the laboratories of the Technological Institute of Aragon (ITA) (Spain), an entity specialised in vertical transport technologies. Amongst these were a bench fatigue test, simulating situations that are more severe and arduous than real ones, and a free fall test in a test tower with a load greater than the maximum allowed.

IP Protection Degree

Equipment designed to work in hostile environments must meet certain standards to ensure its reliability and allow the user to know how far they can go in its use. The IP rating system provides a means of classifying the degree of protection for solids (like dust) and liquids (like water) that the equipment must meet. The system is recognized in most countries and is included in several standards, including IEC 60529.

First Figure			Second Figure	
IP	Protection against direct electrical contacts	Protection against penetration of solid foreign bodies	IP	Protection against penetration of water
0	No protection	No protection	0	No protection
1	Penetration with hand	Bodies $\varnothing > 50$ mm	1	Vertical dripping
2	Penetration with finger $\varnothing > 12$ mm and 80 mm length	Bodies $\varnothing > 12,5$ mm	2	Diverted dripping 15° to the vertical
3	Penetration with tool	Bodies $\varnothing > 2,5$ mm	3	Rain. Diverted dripping 60° to the vertical
4	Penetration with wire	Bodies $\varnothing > 1$ mm	4	Projections of water in all directions.s
5	Same as 4	Dust can penetrate in non-harmful quantities	5	Water jets in all directions
6	Same as 4	No penetration of dust	6	Powerful jets of water in all directions

⁽²⁾ **Type 1:** The car has space for a wheelchair, manual or electric of class A.

Type 2: The car has space for a wheelchair and a companion. The wheelchair can be manual or electric of the classes A or B.

Type 3: The car has space for a wheelchair and other passengers. The wheelchair can be manual or electric of the classes A, B or C. It also allows turning the wheelchairs, class A and B inside the car and persons with walking aids to walk inside of it (people with walking frames...)

Types of wheelchairs (According to EN 12184):

_ Class A: Compact, easy to handle. Wheelchair is not necessarily able to avoid obstacles outdoors

_ Class B: Wheelchair compact and handy enough for some areas inside and capable to get over certain obstacles outdoors.

_ Class C: Wheelchairs, usually of a large size, not necessarily for inside use, but capable to travel longer distances and to avoid obstacles outdoors.

Notes:

BRANCH OFFICES

HEADQUARTER / BRANCH VALENCIA

C/ Coeters, 27, 46980 Paterna

T. +34 961 345 350

39.514439, -0.446309

BRANCH MADRID

C/ Arboleda 18, Nave L 28031 Madrid

T. +34 913 013 720

40.387926, -3.627316

BRANCH BARCELONA

C/ Montserrat Roig, 56 08908 L'Hospitalet.

T +34 932 643 910

41.350241, 2.124635

BRANCH FRANCE

Parc Actilo 10. Rue Gustave Eiffel 95190,
Goussainville.

T. +33 0 183 836 040

49.023324, 2.467375

email: comercial@raloe.com

www.raloe.com



RALOE CUSTOMER SERVICE



T. (+34) 961 345 379
and Field Technical Assistance
based in Reading



T. (+33) 0 183 836 040



T. (+34) 961 369 428

email: customer.service@raloe.com



Raloë Mediterráneo, S.L.

C/ Coeters, 27, 46980 Paterna

T. +34 961 345 350

comercial@raloe.com

www.raloe.com